



# De La Salle School

*A school of the De La Salle Brothers*

11 Choa Chu Kang Street 52 Singapore 689285  
Tel: 6766 7675 Fax: 6762 2075

## PARENT NOTIFICATION RE-OPENING OF SCHOOL IN TERM 3

30 June 2026

PN/2026/007

### Principal's Note

Dear Parents/Guardians,

We warmly welcome our Lasallians back to school!

We closed our first semester with the P5 outdoor adventure learning cohort camp, themed "*Leaving your Legacy as a Resilient Lasallian of the Community*". The camp aimed to equip our P5 Lasallians with the knowledge, skills, and values needed to explore and engage with natural and urban environments safely and responsibly. They took part in a range of activities, including high elements, outdoor cooking, and navigation within and beyond the campsite. Most importantly, they got to bond with their classmates and teachers.



This term, Lasallians can look forward to a variety of school events and learning experiences. On the first day back to school, a series of activities was planned for our Lasallians through the *Ready, Reset, Go* programme to help them prepare for the term ahead. We hope our Lasallians are looking forward to a new term of learning and bonding with their peers. Tune in to our Instagram account ([#delasalleschool\\_sg](https://www.instagram.com/delasalleschool_sg)) to have a peek at our activities.

#### Mission Statement

Enabling Lasallians in a Lasallian community to learn how to learn and to learn how to live; empowering them to be the persons of integrity and persons for others.

#### Vision Statement

Lifelong Learners, Caring Citizens

Our P5 Lasallians will be attending the National Education Show on 11 July 2026, a meaningful event that forms part of our nation-building efforts and national celebrations. In addition to school and national events, we will also be celebrating Teachers' Day at the end of the term. We would like to dedicate this term to recognising the effort and care our teachers have shown towards our Lasallians. We also extend our appreciation to our Parent Support Group for coordinating the celebrations.

Semper Fidelis,

Cheryl Choo  
Principal

## 1. Accolades & Awards

We would like to congratulate all our Lasallians who have achieved commendable results from their participation in the various competitions and express our appreciation to the teachers who have mentored and guided them during their respective journeys.

CCA / Description	Award Attainment
Taekwondo (NSG)	<p><b>Junior Division Girls Yellow 8</b> Chevelle Kiew Zi Xuan – 2<sup>nd</sup> position</p> <p><b>Junior Division Boys Poom 1</b> Goh Jing An, Luke (5E) – Achievement Pin Chay Yi En Ethan (5F) – Achievement Pin</p>
Track and Field (NSG)	<p><b>Senior 1 Boys 80m</b> Aqil Syahmi Bin Muhd Shuffi (P6C) – 8<sup>th</sup> position</p> <p><b>Senior 1 Boys 120m</b> Wong Eu Wen (P6F) – 7<sup>th</sup> position</p> <p><b>Senior 1 Boys Shot put</b> Wong Eu Wen (P6F) – 5<sup>th</sup> position</p> <p><b>Senior 1 Boys Modified Discus</b> Rammkrish Sreeram (P6A) – 6<sup>th</sup> position Aqil Syahmi Bin Muhd Shuffi (P6C) – 7<sup>th</sup> position</p> <p><b>Senior 1 Boys Vertical Jump</b> Dean Loy Syn Ee (P6B) – 3<sup>rd</sup> position</p> <p><b>Senior 1 Boys 4x200m – 6<sup>th</sup> position</b> Aqil Syahmi Bin Muhd Shuffi (P6C) Dean Loy Syn Ee (P6B) Caliph Rizq Aariz Bin Rohaizad (P6A) Wong Eu Wen (P6F)</p> <p><b>Senior 1 Girls Modified Discus</b> Tu Ee Qinn Lyzelle (P6C) – 2<sup>nd</sup> position</p> <p><b>Senior 1 Girls 5x80m – 6<sup>th</sup> position</b> Nur Ariana Binte Fauzuli (P6A) Nurin Alya Zahra Bte Mohd Nasrullah (P6E) Kim Jayle (P6E) Tu Ee Qinn Lyzelle (P6C) Ashvata Syaini Vandayar (P6E)</p> <p><b>Junior 2 Boys Medicine ball throw</b> Lim Qin Feng Timothy (P5A) – 7<sup>th</sup> position</p> <p><b>Junior 2 Girls 120m</b> Rachel Seah Le Xuan (P5C) – 6<sup>th</sup> position</p> <p><b>Junior 2 Girls Long implement throw</b> Rachel Seah Le Xuan (P5C) – 1<sup>st</sup> position</p>

CCA / Description	Award Attainment
	<p><b>Junior 2 Girls Vertical jump</b> Rachel Seah Le Xuan (P5C) – 8<sup>th</sup> position</p> <p><b>Junior 2 Girls Standing long jump</b> Clariss Ng Li En (P5A) – 5<sup>th</sup> position</p> <p><b>Junior 2 Girls Medicine ball throw</b> Terrence Senthuran Ann Yaathva (P5D) – 3<sup>rd</sup> position</p> <p><b>Junior 2 Girls 4x50m – 8<sup>th</sup> position</b> Estelle Ee (P5E) Bethany Tan Yu Xi (P5F) Rachel Seah Le Xuan (P5C) Terrence Senthuran Ann Yaathva (P5D)</p> <p><b>Junior 1 Boys Multi-skill event</b> Erwan Yujin Lim Poncet (P4B) – Gold pin Matthias Khng Hong Sheng (P4F) – Bronze pin Adryan Shafiq (P4D) – Bronze pin Seth Evans Ng Yi Cong (P4D) – Bronze pin</p> <p><b>Junior 1 Boys 60m</b> Seth Evans Ng Yi Cong (P4D) – 6<sup>th</sup> position</p> <p><b>Junior 1 Boys Standing long jump</b> Chen Zihan (P4A) – 6<sup>th</sup> position</p> <p><b>Junior 1 Boys 4x50m – 6<sup>th</sup> position</b> Chen Zihan (P4A) Koh Zi Xuan (P4A) Seth Evans Ng Yi Cong (P4D) Erwan Yujin Lim Poncet (P4B)</p> <p><b>Junior 1 Girls Multi-skill event</b> Loi Maxine Isabella Gatchalian (P4D) – Bronze pin Zhang Yinuo Agnes (P4D) – Bronze pin Megan Khng Si Yi (P3B) – Bronze pin</p> <p><b>Junior 1 Girls 80m</b> Ong Jing Han (P4A) – 4<sup>th</sup> position</p> <p><b>Junior 1 Girls 60m</b> Loi Maxine Isabella Gatchalian (P4D) – 2<sup>nd</sup> position</p> <p><b>Junior 1 Girls Standing long jump</b> Loi Maxine Isabella Gatchalian (P4D) – 3<sup>rd</sup> position</p> <p><b>Junior 1 Girls 4x50m – 4<sup>th</sup> position</b> Megan Khng Si Yi (P3B) Zhang Yinuo Agnes (P4D) Loi Maxine Isabella Gatchalian (P4D) Ong Jing Han (P4A)</p>

CCA / Description	Award Attainment
Track and Field (SJI Invitational 4x100 relay)	<p><b>Boys 4x100m – 1<sup>st</sup> position</b>            Caliph Rizq Aariz Bin Rohaizad (P6A)            Aqil Syahmi Bin Muhd Shuffi (P6C)            Dean Loy Syn Ee (P6B)            Wong Eu Wen (P6F)</p> <p><b>Girls 4x100m – 1<sup>st</sup> position</b>            Nurin Alya Zahra Bte Mohd Nasrullah (P6E)            Tu Ee Qinn Lyzelle (P6C)            Kim Jayle (P6E)            Ashvata Syaini Vandayar (P6E)</p> <p><b>Girls 4x100m – 2<sup>nd</sup> position</b>            Nur Ariana Binte Fauzuli (P6A)            Lim Xin Yu Tiffany (P6F)            Bethany Tan Yu Xi (P5F)            Rachel Seah Le Xuan (P5C)</p>

**2. Energy Matters – Sharing on energy conservation efforts and what students can do to save energy**

As part of the start of school term engagement, we shared on energy conservation efforts with our Lasallians which aims to help them understand disruption to energy supply due to world events. Parents may wish to continue the conversation at home to engage Lasallians on what they can do to play their part in energy conservation on a day-to-day basis with reference to the infographic attached in **Annex A**.

**3. Implementation of the Beverage Container Return Scheme (BCRS) in schools**

Following the National Environment Agency's launch of Singapore's nationwide Beverage Container Return Scheme (BCRS) on 1 Apr 2026, all MOE schools will be implementing this initiative. The scheme encourages mindful consumption, proper recycling habits, and reduced littering whilst creating a clean stream of recyclables.

The BCRS applies a 10-cent deposit on beverages in plastic and metal containers (150ml-3L). This deposit is refunded when containers are returned to designated "Return Right" Reverse Vending Machines (RVMs). Only containers bearing the scheme's deposit mark are eligible for refunds.

From 1 Oct 2026, all regulated beverages sold in school canteens must carry the deposit mark as required by law. Similar to hawker centres, the drinks stallholders will charge the 10-cent deposit directly to students.

Students are encouraged to develop responsible recycling habits by returning empty containers to RVMs located outside school premises. Refunds will be processed digitally through EZ-Link cards or DBS PayLah!. Whilst rinsing is not required for refunds, we encourage students to empty and rinse containers before returning them as a good recycling practice and to address hygiene concerns. We also hope that students maintain healthy lifestyles, which includes drinking plain water for proper hydration.

Please refer to this link (<https://www.nea.gov.sg/our-services/waste-management/beverage-container-return-scheme>) for more information on BCRS.

Thank you for your support in helping our students develop sustainable habits.

#### 4. **Youth Day and General Office Closure (Monday, 6 July 2026)**

Please note that there will be no school for all Lasallians on **Monday, 6 July 2026**, due to Youth Day school holiday in lieu. The General Office will also be closed for staff training.

#### 5. **Racial Harmony Day (Monday, 20 July 2026)**

School will be commemorating Racial Harmony Day on Monday, 20 July 2026. To add to the celebratory mood for the occasion, **Lasallians are encouraged to wear traditional ethnic costumes for the day**. Alternatively, Lasallians can continue to wear their school uniform/PE attire on that day. All Lasallians are required to wear school shoes.

This year, our school will be partnering Limbang Constituency Office and our Parent Support Group to commemorate Racial Harmony Day. Anchored in the theme of *"Our People, Our Tapestry"*, Lasallians will be able to enjoy various activity booths on the various ethnic food, costumes and dance forms.

#### 6. **Oral Preliminary Examination (Primary 6) and Home-Based Learning (Primary 1 to 5) (Wednesday, 29 July 2026)**

The Primary 6 Oral Preliminary Examination will be conducted on Wednesday, 29 July 2026. Details of the preliminary examination will be shared with the Primary 6 Lasallians nearer the date.

Primary 1 to 5 Lasallians will not report to school and will be on Home-Based Learning (HBL) for that day. The asynchronous online tasks will be on Student Learning Space (SLS).

Please remind your child/ward to check whether they can log into the SLS portal prior to HBL Day through <https://learning.moe.edu.sg>. If your child/ward has forgotten their password, please perform a self-reset or visit our school website (<https://www.delasalle.moe.edu.sg/for-parents/hbl>) to complete a reset.

#### 7. **School calendar (Semester 2)**

Our school calendar for Semester 2 can be found in **Annex B**.

The school calendar of events is also now available for viewing directly in Parent Gateway. Parents can click on **"School Calendar"** under **Services** tab within their **Parent Gateway** app to view school events. School events will be updated on a termly basis.

## 8. Submission for reason of Absence via Parent's Gateway

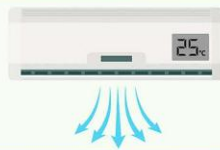
Parents can now submit student absences through the Parents Gateway (PG) app under the "Services" tab, allowing them to select dates, provide reasons, and upload medical certificates. The app allows for advance notification and editing of submissions, with successful submissions confirmed with a checkmark. You may refer to **Annex C** for more information.

End of Notification

# LET'S SAVE ENERGY TOGETHER!



**Stay cool with fans**



**Using the air-con?  
Set it to 25°C or higher**



**Choose energy-efficient  
appliances**



**Switch off power sockets  
when not in use**



**Walk, cycle or take  
public transport**



## **Government support is available**

**Households**  
Climate Vouchers

**Businesses**  
Energy Efficiency Grant,  
Resource Efficiency Grant For Emissions



[go.gov.sg/save-energy](https://go.gov.sg/save-energy)

**De La Salle School**  
**2026 Term 3 Calendar of Events**

Week	Date	Day	Event/Activity	Level (s)
1	29 Jun	Mon	Class Bonding Day (normal school hours)	ALL
	30 Jun & 1 Jul	Tue & Wed	P6 Learning Journey to Lee Kong Chian Natural History Museum (scheduled classes)	P6
	3 Jul	Fri	P1 Learning Journey to Children's Museum (scheduled classes)	P1
2	6 Jul	Mon	<b>Youth Day (School Holiday)</b>	-
	7 – 9 Jul	Tue - Thu	P1 Learning Journey to Children's Museum (scheduled classes)	P1
	8 Jul	Wed	P6 Learning Journey to Lee Kong Chian Natural History Museum (scheduled classes)	P6
	11 Jul	Sat	P5 National Education Show @ National Stadium	P5
3	14 – 16 Jul	Tue - Thu	P4 Social Studies Learning Journey – Kreta Ayer (after-school; scheduled classes)	P4
4	20 Jul	Mon	Racial Harmony Day Commemoration	ALL
4 & 5	20 – 31 Jul	-	P3 & P4 Weighted Assessment 3 (WA3) - Mother Tongue (Oral) (during curriculum time)	P3 & P4
5 & 6	27 – 6 Aug	-	P5 WA3 – Mother Tongue (Oral) P3 WA3 – English (Oral) (during curriculum time)	P3 & P5
5	29 Jul	Wed	<b>Home-based Learning (HBL) – P1 to P5</b>	P1 – P5
	29 Jul	Wed	P6 Prelim Exams- English & Mother Tongue (Oral) – Day 1 (am)	P6
	30 Jul	Thu	P6 Prelim Exams- English & Mother Tongue (Oral) – Day 2 (pm)	P6
6	3 Aug	Mon	Mass for P6 Lasallians taking PSLE	P6
	6 Aug	Thu	P5 Social Studies Learning Journey – Indian Heritage Centre (scheduled classes)	P5
	7 Aug	Fri	National Day Celebrations – curtailed school hours (7.30 – 10.30 am)	ALL
7	<b>10 Aug</b>	<b>Mon</b>	<b>National Day (Public Holiday)</b>	-
	12 & 13 Aug	Wed & Thu	<b>PSLE Oral</b>	P6
			<b>No-school Day – P1 to P5</b>	P1 - P5
	14 Aug	Fri	P6 Prelim Exams – Listening Comprehension (English & Mother Tongue)	P6

Week	Date	Day	Event/Activity	Level (s)
8	17 Aug	Mon	P6 Prelim Exams – English / Fdn English (Paper 1 & 2)	P6
	18 Aug	Tue	P6 Prelim Exams – Mathematics/ Fdn Mathematics (Paper 1 & 2)	P6
	19 Aug	Wed	P6 Prelim Exams – Mother Tongue (Paper 1 & 2) -Fdn Mother Tongue (Paper 1)	P6
	20 Aug	Thu	P6 Prelim Exams – Science / Fdn Science	P6
	21 Aug	Fri	P6 Prelim Exams – Higher Mother Tongue (Paper 1 & 2)	P6
8 & 9	17 – 28 Aug	-	P3 to P5 WA3 – Maths, Science & Higher Mother Tongue P4 & P5 WA3 – English	P3 – P5
9	26 Aug	Wed	P3 High Ability Learners Identification Exercise (Gifted Education Branch)	P3
10	1 Sep	Tue	<b>P1 to P5 - Parent-Child-Teacher Conference (PCTC) – (no-school day)</b> P6 – normal school hours	P1 – P5 P6
	3 Sep	Thu	Teachers' Day Prayer Service & Celebrations – curtailed school hours (7.30 – 10.30 am)	ALL
	4 Sep	Fri	<b>Teachers' Day (School Holiday)</b>	-

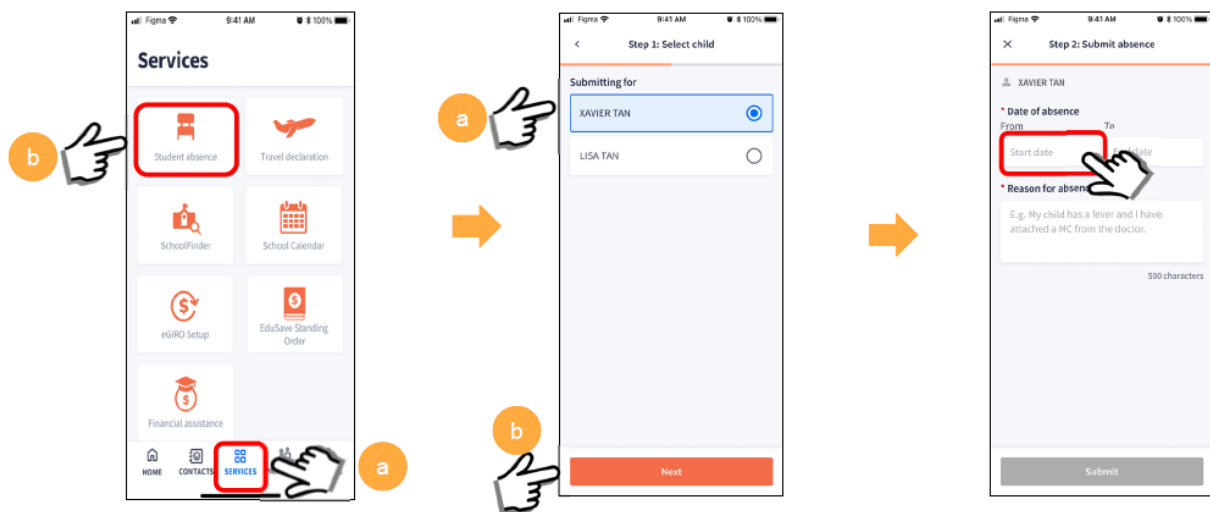
2026 Term 4 Calendar of School Activities

Week	Date	Day	Event / Activity	Level (s)
1	15 Sep	Tue	<b>PSLE – Listening Comprehension</b>	P6
			<b>No-school day - P1 to P5</b>	P1 - P5
2	21 & 22 Sep	Mon & Tue	<b>End-of-Year Exam (EYE) – P5 Oral Exam (English &amp; Mother Tongue) (after-school)</b>	P5
	21 – 23 Sep	Mon - Wed	P6 PSLE Study Break	P6
	24 Sep	Thu	<b>PSLE (Written) – English/Foundation English</b>	P6
			No-school day for P1 – Home-based Learning	P1
	25 Sep	Fri	<b>PSLE (Written) – Maths/Foundation Maths</b>	P6
			No-school day for P2 – Home-based Learning	P2
3	28 Sep	Mon	<b>PSLE (Written) – Mother Tongue /Foundation Mother Tongue</b>	P6
			No-school day for P3 – Home-based Learning	P3
	29 Sep	Tue	<b>PSLE (Written) – Science / Foundation Science</b>	P6
			No-school day for P4 – Home-based Learning	P4
	30 Sep	Wed	<b>PSLE (Written) – Higher Mother Tongue</b>	P6
	1 Oct	Thu	Children’s Day Prayer Service & Celebrations	ALL
	2 Oct	Fri	<b>CHILDREN’S DAY (School Holiday)</b>	-
4	6 Oct	Tue	<b>EYE – English / Foundation English</b> (Listening Comprehension & Paper 1)	P3 - 5
	7 Oct	Wed	<b>EYE – Mother Tongue</b> (Listening Comprehension & Paper 1)	P3 - 5
			<b>Foundation Mother Tongue</b> (Listening Comprehension)	
	8 Oct	Thu	<b>EYE – P4 Oral Exam (Mother Tongue)</b> (during curriculum time)	P4
9 Oct	Fri	<b>EYE – P4 Oral Exam (English)</b> (during curriculum time)	P4	

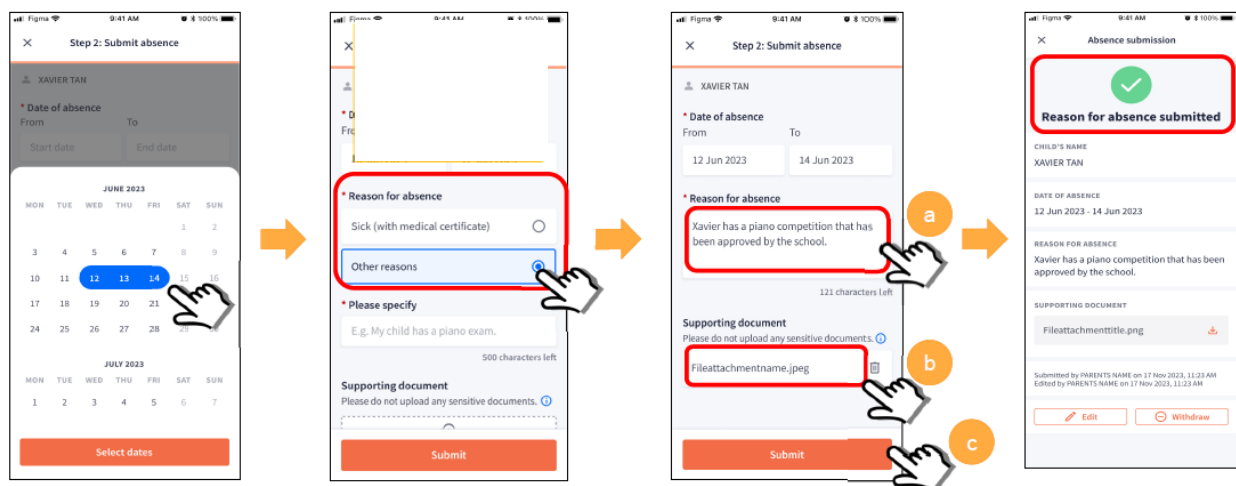
Week	Date	Day	Event / Activity	Level (s)
5	12 – 14 Oct	Mon - Wed	<b>PSLE - MARKING EXERCISE</b>	ALL
			No-school day for P1-P6*	ALL
	13 & 14 Oct	Tue & Wed	*P4 Outdoor Education Learning Journey to Neighbourhood Park (scheduled classes)	P4
	15 Oct	Thu	<b>EYE – P3 Oral (English)</b> (during curriculum time)	P3
	16 Oct	Fri	<b>EYE – P3 Oral (Mother Tongue)</b> (during curriculum time)	P3
6	21 Oct	Wed	<b>EYE - English Language/Fdn English Language (Paper 2)</b>	P3 - 5
	22 Oct	Thu	<b>EYE - Maths /Fdn Maths</b>	P3 - 5
	23 Oct	Fri	<b>EYE - Mother Tongue (Paper 2) / Fdn MT (Paper 1)</b>	P3 - 5
7	26 Oct	Mon	<b>EYE - Science /Fdn Science</b>	P3 - 5
	27 Oct	Wed	<b>EYE - Higher Mother Tongue (Paper 1 &amp; 2)</b>	P5
9	9 Nov	Mon	<b>DEEPAVALI (Public Holiday)</b>	-
	11 Nov	Wed	<b>Results Processing / Promotion Day (No-school day for P1 - 6)</b>	ALL
10	16 Nov	Mon	Thanksgiving Mass	ALL
	19 Nov	Thu	Appreciation / Acts of Service Day	ALL
	20 Nov	Fri	P6 Prize-giving & Graduation Day (No-school day for P1 – P5)	P6

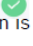
*N.B. The stated dates/activities may be subject to change.*

## Submit child's reason for absence



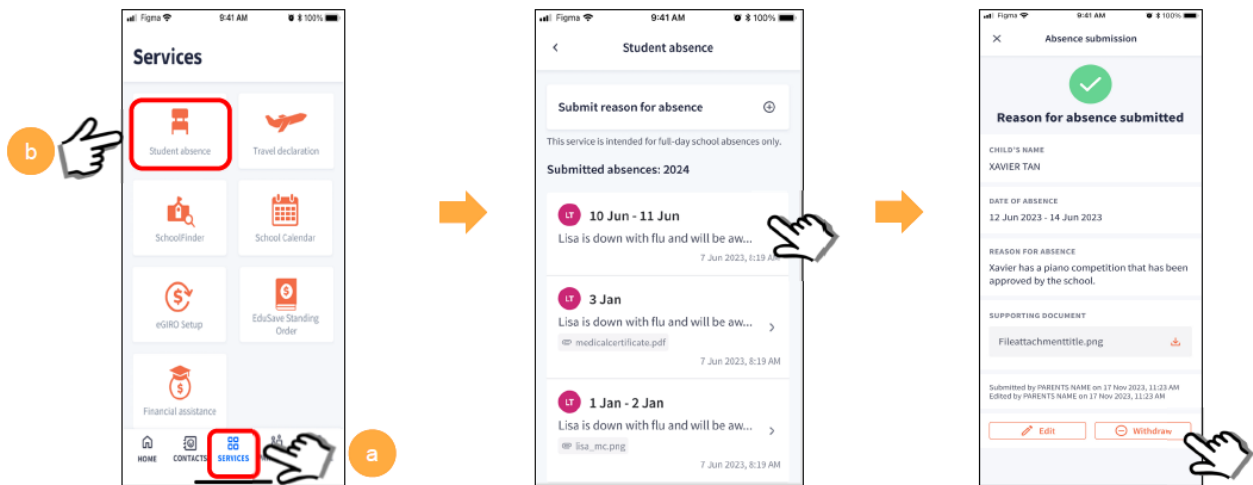
1. a) Go to "SERVICES" tab.  
b) Click on "Student absence"
2. a) Select your child's name  
b) Click on "Next"
3. Click on box to activate calendar for selection of date.



4. Select the date(s) of absence.
5. Select reason for absence.
6. a) Type in reason for absence.  
b) Upload medical certificate/ relevant documents<sup>1</sup>.  
c) Click on "Submit".
7. You will see a  once your submission is successful.

<sup>1</sup> Do not upload documents that are sensitive in nature (detailed medical records, court documents, etc.)

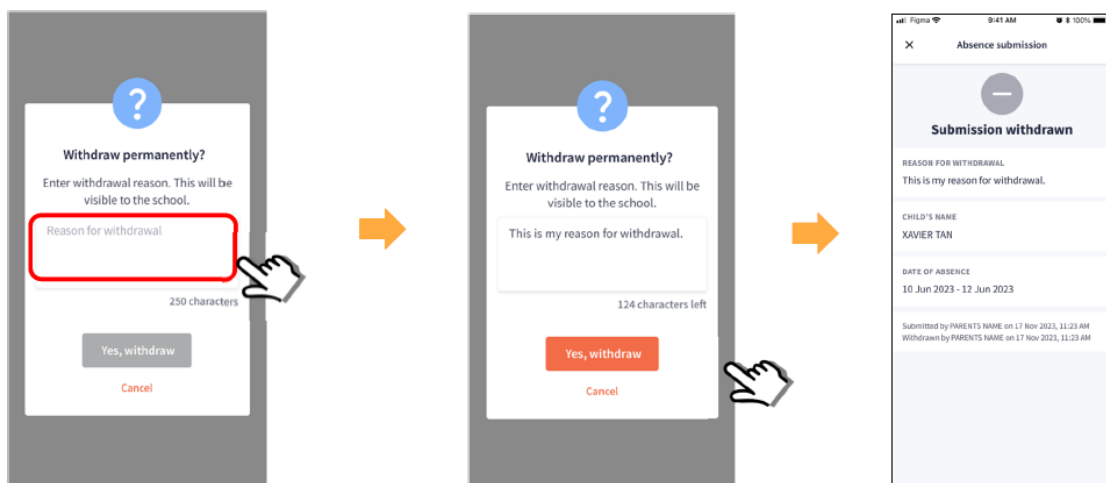
## Withdrawal of submitted absence



1. a) Go to "SERVICES" tab.  
b) Click on "Student absence"

2. Select the submission that you would like to withdraw.

3. Click on the withdraw button.



4. A pop-up screen will appear. Type reason for withdrawal.

5. Click on "Yes, withdraw".

6. Confirmation page to show submission withdrawn successfully. Teachers will be informed of the withdrawal, and they will no longer be able to see the reason submitted previously.

## Expiry Date for Editing and/or Withdrawing Absence Submission

**Absence submission**

**Reason for absence submitted**

CHILD'S NAME  
XAVIER TAN

DATE OF ABSENCE  
10 Jun 2023 - 12 Jun 2023

REASON FOR ABSENCE  
Xavier has a piano competition that has been approved by the school.

SUPPORTING DOCUMENT  
Fileattachmenttitle.png

Submitted by PARENTS NAME on 17 Nov 2023, 11:23 AM  
Edited by PARENTS NAME on 17 Nov 2023, 11:23 AM

Editing or withdrawing your submission is no longer available. For any modifications, please contact the school directly.

Editing or withdrawing your submission is no longer available. For any modification, please contact the school directly.

Parent will only be able to edit/withdraw absence submission within 2 weeks of submission OR within 2 weeks after absence date, whichever is later.

### **Example 1:**

Parent submit MC on 12 Jan for absence on 12 Jan – Edit or withdrawal is permitted until 26 Jan

### **Example 2:**

Parent submit absence on 12 Jan for 12 Sep, edit or withdrawal is permitted until 26 Sep

### **Example 3:**

Parent submit absence on 15 Jan for 12 Jan, edit or withdrawal is permitted until 29 Jan

### **Note:**

If teacher requests for a follow-up, there will be **no expiry date** for parents to send back and edit or withdraw.

## FREQUENTLY ASKED QUESTIONS (FOR PARENTS)

### Advance Submission

1. **My child has a medical appointment next month. Can I submit an absence notification in advance?**

Yes, parents may submit a notification of absence in advance through the “services” tab in the Parents Gateway App.

2. **I had made a submission in advance, but the appointment date has been changed. Can I edit my submission?**

Yes, you may click on to services tab and search for the submission that you would like to edit. You can update the details and click on submit edits.

### Editing Submissions of Absence

3. **I had submitted the wrong document. What should I do?**

You may click on the ‘services’ tab, search for the wrong submission. Click into the post and search for the field “Supporting document”, Click on the delete icon and upload the correct document. Then click on submit edits.

4. **Can my spouse edit a submission that I had made?**

Your spouse can edit the submission if it is within 2 weeks of your submission.

### Delayed Submission

5. **My child was absent a few weeks ago. Can I still use this service to submit the reason for my child’s absence?**

Yes, you may still submit the reason if you had not done so within the calendar year.

### Withdrawal of Submission

6. **When I withdraw the submission, can the school still see what I had submitted?**

The school will be notified of the withdrawal, but they will no longer be able to see the submission or file submitted previously.

### Rejection / Deletion of Submission

7. **Why did the teacher reject / delete my submission?**

The supporting documents that you have submitted are sensitive in nature (eg. detailed medical health information or court documents, etc).